

**Town of Brooklyn**

**Voucher Detail Listing**

Fiscal Year: 2022-2023

Voucher Batch Number: 1584

05/31/2023

Vendor Remit Name  
Description

Vendor #

QTY

PO No.

Invoice  
Invoice Date

Account

Amount

Eversource  
Check Group:

01082

Acc# 5162 861 4026 33 Plaza St

1 20230963

4026 5/18/2023

6013.00.0000.56220

WPCA-Electricity

\$121.53

Acc# 51065624041 20 Tatic Rd

1 20230963

4041 5/16/2023

6013.00.0000.56220

WPCA-Electricity

\$1,204.59

Check #: 0

End of Report

PO/Invoice Total:	<u>\$1,326.12</u>
Vendor Total:	<u>\$1,326.12</u>
Grand Total:	<u>\$1,326.12</u>



# EVERSOURCE

Account Number: **5162 861 4026**

Statement Date: **05/18/23**

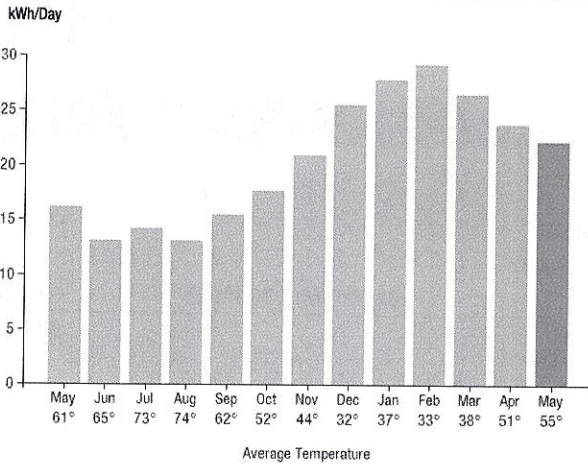
Service Provided To:  
BROOKLYN SEWER AUTHORITY

Total Amount Due  
by 07/17/23

**\$121.53**

Amount Due On 05/18/23	\$144.05
Last Payment Received On 05/05/23	-\$144.05
Balance Forward	\$0.00
Total Current Charges	\$121.53

## Electric Usage History - Kilowatt Hours (kWh)



## Current Charges for Electricity

Supply

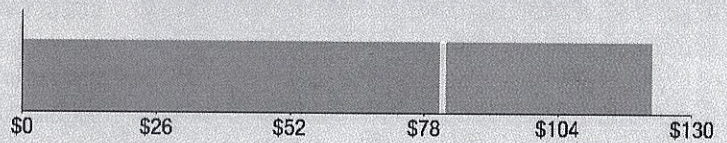
**\$81.00**

Cost of electricity from DIRECT ENERGY BUSINESS, LLC

Delivery

**\$40.53**

Cost to deliver electricity from Eversource



Your electric supplier is

DIRECT ENERGY BUSINESS, LLC  
1001 LIBERTY AVE  
PITTSBURGH PA 15222-3714  
888-925-9115

PO# 20230963

Acct# 6013.00.0000.56220

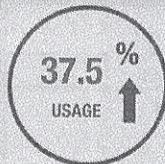
Signature \_\_\_\_\_

Date \_\_\_\_\_

## Electric Usage Summary

This month your average daily electric use was **22.0 kWh**

This month you used **37.5% more** than at the same time last year



## News For You

As we head into the cooling season, you can take steps to reduce your energy use and bill. Take advantage of energy-saving improvements to help you stay comfortable efficiently with Home Energy Solutions. You'll receive on-the-spot services plus recommendations and rebates for additional ways to save. For help with your energy bill and ways to lower your energy use visit [Eversource.com/price](http://Eversource.com/price).

Remit Payment To: Eversource, PO Box 56002, Boston, MA 02205-6002

CE\_230518PROD.TXT

# EVERSOURCE

Account Number: **5162 861 4026**

Non-residential and residential non-hardship customers may be subject to a 1.00% late payment charge if the "Total Amount Due" is not received by 06/15/23.

Please make your check payable to Eversource and consider adding \$1 for Operation Fuel.

To add more or make a payment today, visit [Eversource.com](http://Eversource.com). If mailing, please allow up to 5 business days to post.

Total Amount Due  
by 07/17/23

**\$121.53**

Amount Enclosed

BROOKLYN SEWER AUTHORITY  
ATTN SHERRI SOUCY  
PO BOX 171  
BROOKLYN CT 06234-0171

Eversource  
PO Box 56002  
Boston, MA 02205-6002

5162861402641 0000121532 0000121532



# EVERSOURCE

Account Number: **5162 861 4026**

Customer name key: BROO

Statement Date: 05/18/23

Service Provided To:  
BROOKLYN SEWER AUTHORITY

Svc Addr: 33 PLAZA ST  
BROOKLYN CT 06234  
Serv Ref: 977772007 Bill Cycle: 13  
Service from 04/19/23 - 05/17/23 28 Days  
Next read date on or about: Jun 19, 2023

Meter Number	Current Read	Previous Read	Current Usage	Reading Type
894213192	46239	45614	625	Actual

Total Demand Use = 2.00 KW

Monthly kWh Use						
May	Jun	Jul	Aug	Sep	Oct	Nov
468	420	426	392	495	514	608
Dec	Jan	Feb	Mar	Apr	May	
819	864	820	772	786	625	

### Contact Information

Emergency: 800-286-2000

www.eversource.com

Pay by Phone: 888-783-6618

Customer Service: 888-783-6617

Total Amount Due  
by 07/17/23

**\$121.53**

### Electric Account Summary

Amount Due On 05/18/23	\$144.05
Last Payment Received On 05/05/23	-\$144.05
Balance Forward	\$0.00
Current Charges/Credits	
Electric Supply Services	\$81.00
Delivery Services	\$40.53
Total Current Charges	\$121.53
<b>Total Amount Due</b>	<b>\$121.53</b>

### Total Charges for Electricity

#### Supplier

DIRECT ENERGY BUSINESS

Service Reference: 977772007

Generation Srv Chrg\*\* 625.00kWh X \$0.12960 \$81.00

Subtotal Supplier Services \$81.00

#### Delivery

(DISTRIBUTION RATE: 030)

Service Reference: 977772007

Distr Cust Srv Chrg \$44.00

Revenue Adj Mechanism 625.00kWh X \$0.00192 \$1.20

FMCC Delivery Chrg 625.00kWh X \$-0.01500 -\$9.38

Comb Public Benefit Chrg\* 625.00kWh X \$0.00753 \$4.71

Subtotal Delivery Services \$40.53

**Total Cost of Electricity \$121.53**

**Total Current Charges \$121.53**

CE\_230518PROD.TXT

\*The Combined Public Benefits Charge represents a combination of three charges formerly known as: Conservation and Load Mgmt Charge, Renewable Energy Investment Charge, and Systems Benefits Charge. This charge also includes the Conservation Adjustment Mechanism approved by the Public Utilities Regulatory Authority in Docket No. 13-11-14.

\*\*Effective January 1, 2007, the Generation Services Charge (GSC) and the Bypassable Federally Mandated Congestion Charge (BFMCC) have been combined into the "GSC Charge" listed in the Supplier Services section of your bill. The GSC reflects all of the cost of procuring energy from Eversource wholesale suppliers. The BFMCC portion of this line item is -\$0.0015 / kWh. If you multiply this BFMCC rate by the number of kWhs on your bill, you can calculate the dollar amount associated with the BFMCC.

\*\*\*Electric System Improvements: Recovers company investments that protect, strengthen or modernize the electric grid.

# EVERSOURCE

Account Number: 5162 861 4026

Customer name key: BR00

Statement Date: 05/18/23

Service Provided To:  
BROOKLYN SEWER AUTHORITY

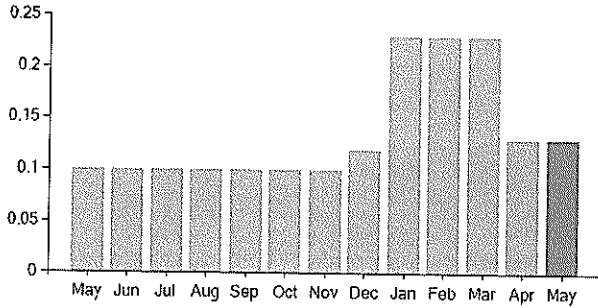
Total Amount Due  
by 07/17/23

**\$121.53**

Continued from previous page...

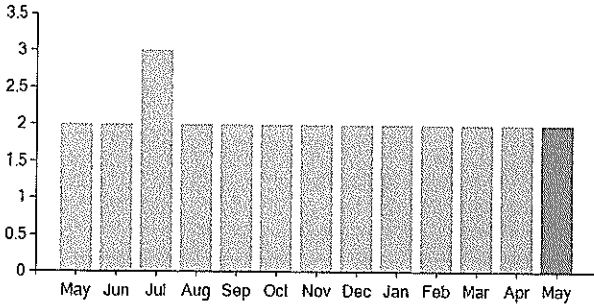
## Supply Rate

Dollars / kWh



## Demand Profile

Max. Demand



## Important Messages About Your Account

Thank you for participating in the Online Bill and Payment Service.





# EVERSOURCE

Account Number: **5106 562 4041**

Statement Date: **05/16/23**

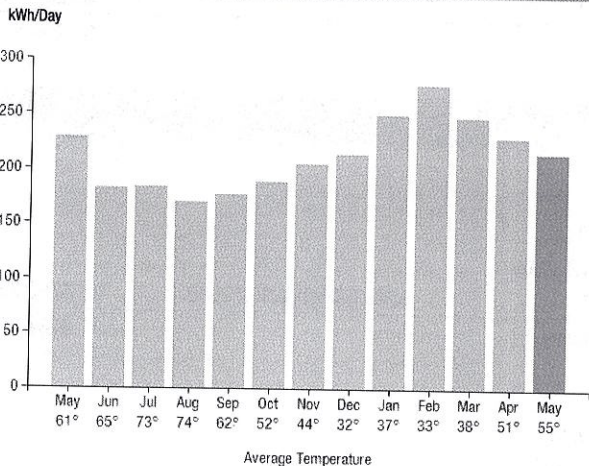
Service Provided To:  
TOWN OF BROOKLYN

Total Amount Due  
by 07/15/23

**\$1,204.59**

Amount Due On 05/16/23	\$1,397.69
Last Payment Received On 05/05/23	-\$1,397.69
Balance Forward	\$0.00
Total Current Charges	<b>\$1,204.59</b>

## Electric Usage History - Kilowatt Hours (kWh)



## Current Charges for Electricity

Supply

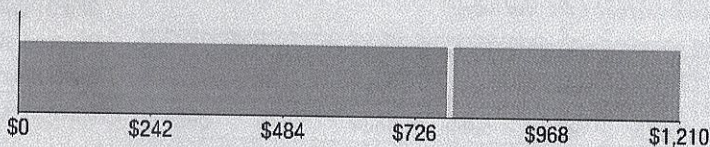
**\$783.82**

Cost of electricity from DIRECT ENERGY BUSINESS, LLC

Delivery

**\$420.77**

Cost to deliver electricity from Eversource



Your electric supplier is

DIRECT ENERGY BUSINESS, LLC  
1001 LIBERTY AVE  
PITTSBURGH PA 15222-3714  
888-925-9115

PO# 20230963

Acct# 6013.00.0000.56220

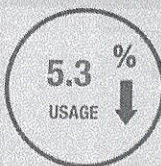
Signature \_\_\_\_\_

Date \_\_\_\_\_

## Electric Usage Summary

This month your average daily electric use was  
**216.0 kWh**

This month you used **5.3% less** than at the same time last year



## News For You

As we head into the cooling season, you can take steps to reduce your energy use and bill. Take advantage of energy-saving improvements to help you stay comfortable efficiently with Home Energy Solutions. You'll receive on-the-spot services plus recommendations and rebates for additional ways to save. For help with your energy bill and ways to lower your energy use visit [Eversource.com/price](http://Eversource.com/price).

Remit Payment To: Eversource, PO Box 56002, Boston, MA 02205-6002

CE\_230516PROD.TXT

# EVERSOURCE

Account Number: **5106 562 4041**

Non-residential and residential non-hardship customers may be subject to a 1.00% late payment charge if the "Total Amount Due" is not received by 06/13/23.

Please make your check payable to Eversource and consider adding \$1 for Operation Fuel.

To add more or make a payment today, visit [Eversource.com](http://Eversource.com). If mailing, please allow up to 5 business days to post.

Total Amount Due  
by 07/15/23

**\$1,204.59**

Amount Enclosed

TOWN OF BROOKLYN  
PO BOX 171  
BROOKLYN CT 06234-0171

Eversource  
PO Box 56002  
Boston, MA 02205-6002

5106562404134 0001204591 0001204591



# EVERSOURCE

Account Number: **5106 562 4041**

Customer name key: BROO

Statement Date: 05/16/23

Service Provided To:  
TOWN OF BROOKLYN

Total Amount Due  
by 07/15/23

**\$1,204.59**

Svc Addr: 20 TATNIC RD  
BROOKLYN CT 06234  
Serv Ref: 481282002 Bill Cycle: 12  
Service from 04/18/23 - 05/16/23 28 Days  
Next read date on or about: Jun 16, 2023

Meter Number	Current Read	Previous Read	Current Usage	Reading Type
890386902	16504	16441	63	Actual

Cust provided ID: PUMP STATION

Total Demand Use = 18.20 kW

63 X Meter Constant of 96 = 6,048 Billed Usage

Monthly kWh Use						
May	Jun	Jul	Aug	Sep	Oct	Nov
6624	5472	5856	5088	5664	5472	5952
Dec	Jan	Feb	Mar	Apr	May	
6432	8256	7776	7200	7584	6048	

### Contact Information

Emergency: 800-286-2000

www.eversource.com

Pay by Phone: 888-783-6618

Customer Service: 888-783-6617

### Electric Account Summary

Amount Due On 05/16/23	\$1,397.69
Last Payment Received On 05/05/23	-\$1,397.69
Balance Forward	\$0.00
Current Charges/Credits	
Electric Supply Services	\$783.82
Delivery Services	\$420.77
Total Current Charges	\$1,204.59
<b>Total Amount Due</b>	<b>\$1,204.59</b>

### Total Charges for Electricity

#### Supplier

DIRECT ENERGY BUSINESS

Service Reference: 481282002

Generation Srvc Chrg**	6048.00kWh X \$0.12960	\$783.82
Subtotal Supplier Services		\$783.82

#### Delivery

(DISTRIBUTION RATE: 030)

Service Reference: 481282002

Transmission Dmd Chrg	16.20KW X \$9.36000	\$151.63
Distr Cust Srvc Chrg		\$44.00
Distribution Dmd Chrg	16.20KW X \$14.22000	\$230.36
Electric Sys Improvements***	16.20KW X \$1.86000	\$30.13
Revenue Adj Mechanism	6048.00kWh X \$0.00192	\$11.61
CTA Demand Chrg	16.20KW X \$-0.11000	-\$1.78
FMCC Delivery Chrg	6048.00kWh X \$-0.01500	-\$90.72
Comb Public Benefit Chrg*	6048.00kWh X \$0.00753	\$45.54
Subtotal Delivery Services		\$420.77
<b>Total Cost of Electricity</b>		<b>\$1,204.59</b>

**Total Current Charges**

**\$1,204.59**

CE\_230516PROD.TXT

\*The Combined Public Benefits Charge represents a combination of three charges formerly known as: Conservation and Load Mgmt Charge, Renewable Energy Investment Charge, and Systems Benefits Charge. This charge also includes the Conservation Adjustment Mechanism approved by the Public Utilities Regulatory Authority in Docket No. 13-11-14.

\*\*Effective January 1, 2007, the Generation Services Charge (GSC) and the Bypassable Federally Mandated Congestion Charge (BFMCC) have been combined into the "GSC Charge" listed in the Supplier Services section of your bill. The GSC reflects all of the cost of procuring energy from Eversource wholesale suppliers. The BFMCC portion of this line item is -\$0.0015 / kWh. If you multiply this BFMCC rate by the number of kWhs on your bill, you can calculate the dollar amount associated with the BFMCC.

\*\*\*Electric System Improvements: Recovers company investments that protect, strengthen or modernize the electric grid.



# EVERSOURCE

Account Number: 5106 562 4041

Customer name key: BR00

Statement Date: 05/16/23

Service Provided To:  
TOWN OF BROOKLYN

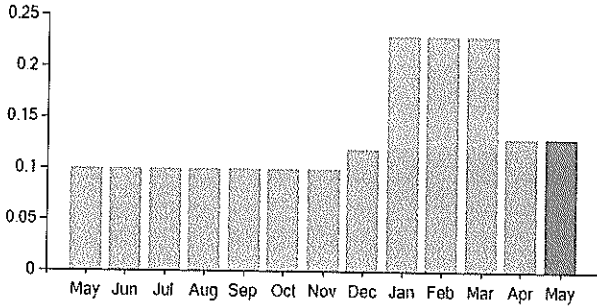
Total Amount Due  
by 07/15/23

**\$1,204.59**

Continued from previous page...

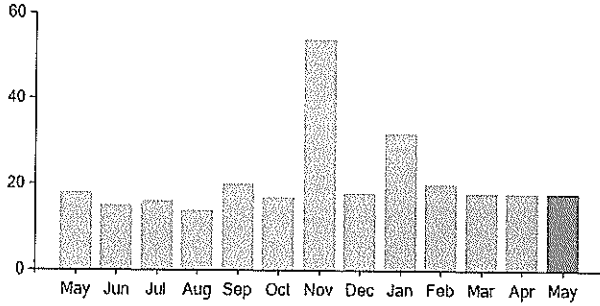
## Supply Rate

Dollars / kWh



## Demand Profile

Max. Demand



## Important Messages About Your Account

Thank you for participating in the Online Bill and Payment Service.

