

Wilcox

5 Fairway Drive

22-85
0.65 AC.

Sawcut remove
and replace
existing sidewalk.

6-inch Service line
@ 1% slope min.

PROP. HANDICAP
RAMP

invert 102.5

INSTALL NEW BIT.
APRON AT EXIST. DRIVE

PROPOSED
HOUSE

6-inch Clean-out
at surface grade,
invert 101.5

SMH EL
INV IN = 101.15
BY OUT = 101.1

Saw-cut remove
and replace
existing pavement

20' PAVED
APRON (TYP.)

CB #1
FR. EL = 106.70
INV = 103.6

8-inch X 6 inch
service saddle

YARD BOX

L=154±

invert 101.08

TELE
W.M.

136' - 8" PVC

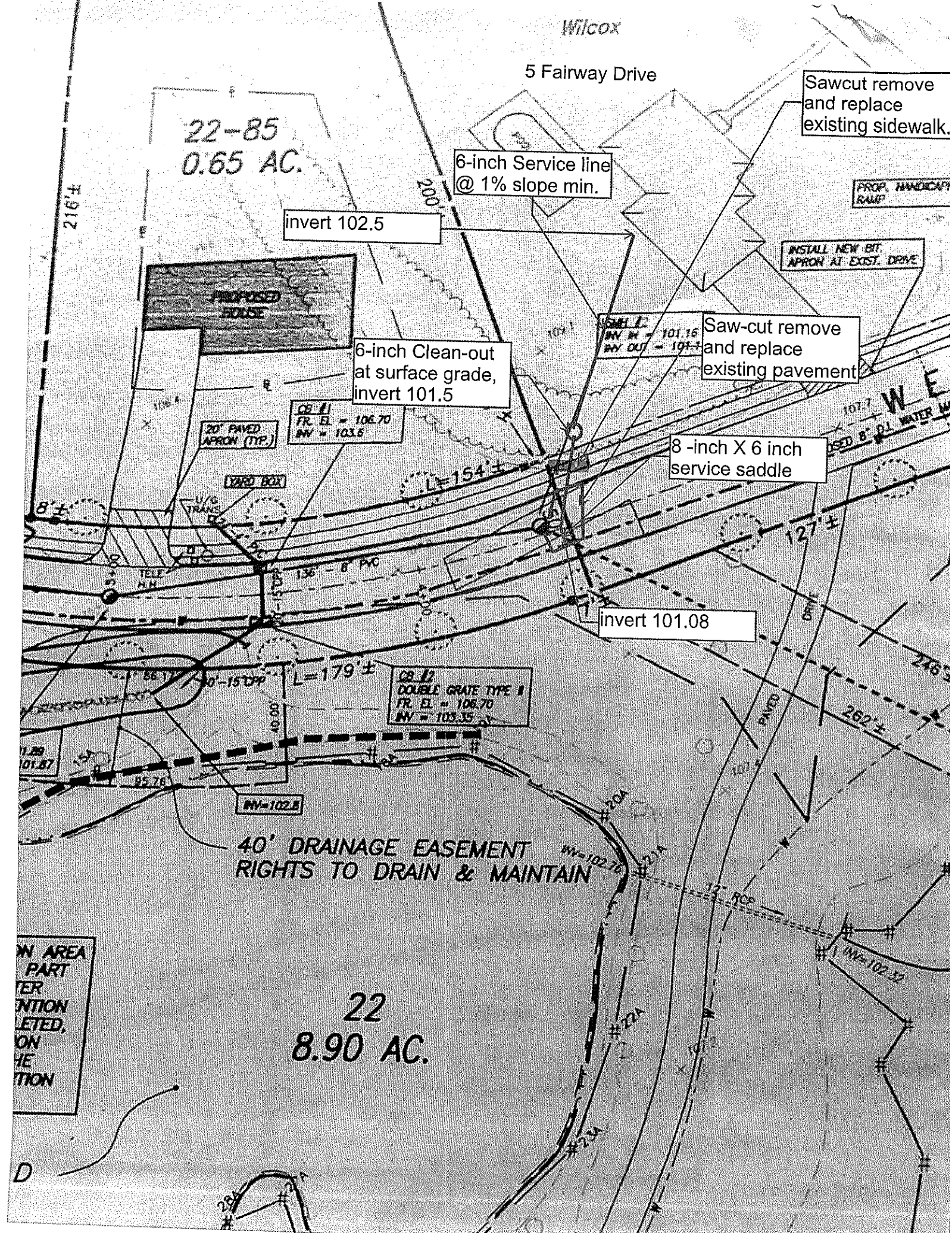
CB #2
DOUBLE GRATE TYPE II
FR. EL = 106.70
INV = 103.35

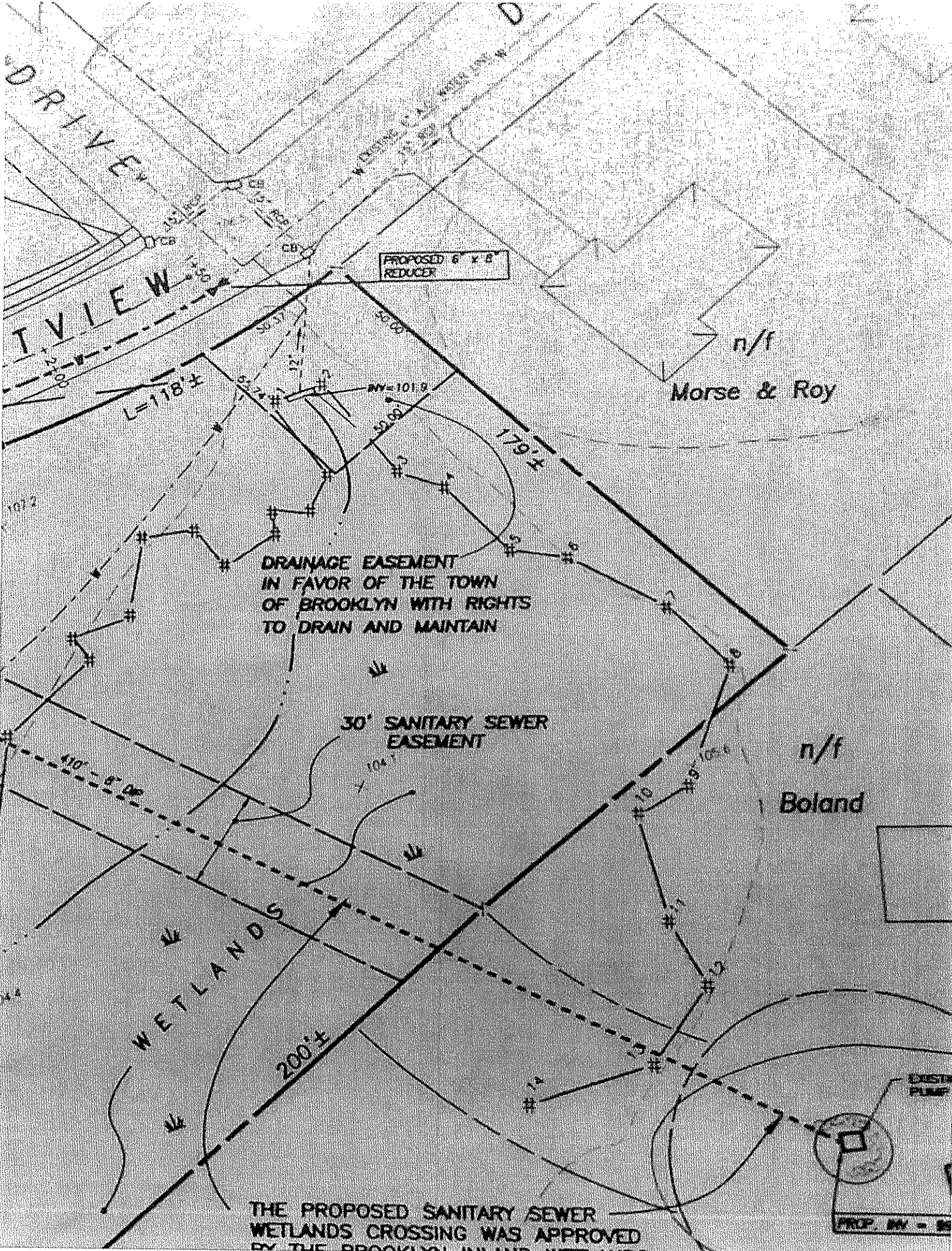
40' DRAINAGE EASEMENT
RIGHTS TO DRAIN & MAINTAIN

IN AREA
PART
TER
ENTION
LETED,
ON
HE
TION

22
8.90 AC.

D





PROPOSED 6" x 8" REDUCER

DRAINAGE EASEMENT
IN FAVOR OF THE TOWN
OF BROOKLYN WITH RIGHTS
TO DRAIN AND MAINTAIN

30' SANITARY SEWER
EASEMENT

WETLANDS

n/f
Morse & Roy

n/f
Boland

THE PROPOSED SANITARY SEWER
WETLANDS CROSSING WAS APPROVED
BY THE BROOKLYN INLAND WETLANDS

PROP. INV - 85