



1:2,257



0.1
0 0.04 0.1 Miles
WGS 1984 Web Mercator Auxiliary Sphere
© Latitude Geographics Group Ltd.

This map is a user generated static output from an Internet mapping site and is for reference only. Data layers that appear on this map may or may not be accurate, current, or otherwise reliable.

THIS MAP IS NOT TO BE USED FOR NAVIGATION

Legend

- Town
- Buildings 2012
- Parcels
- Wetlands
 - Alluvial and Floodplain Soils
 - Poorly Drained and Very Poorly Dre
- Rivers and Streams
- Lakes and Ponds

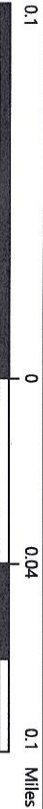
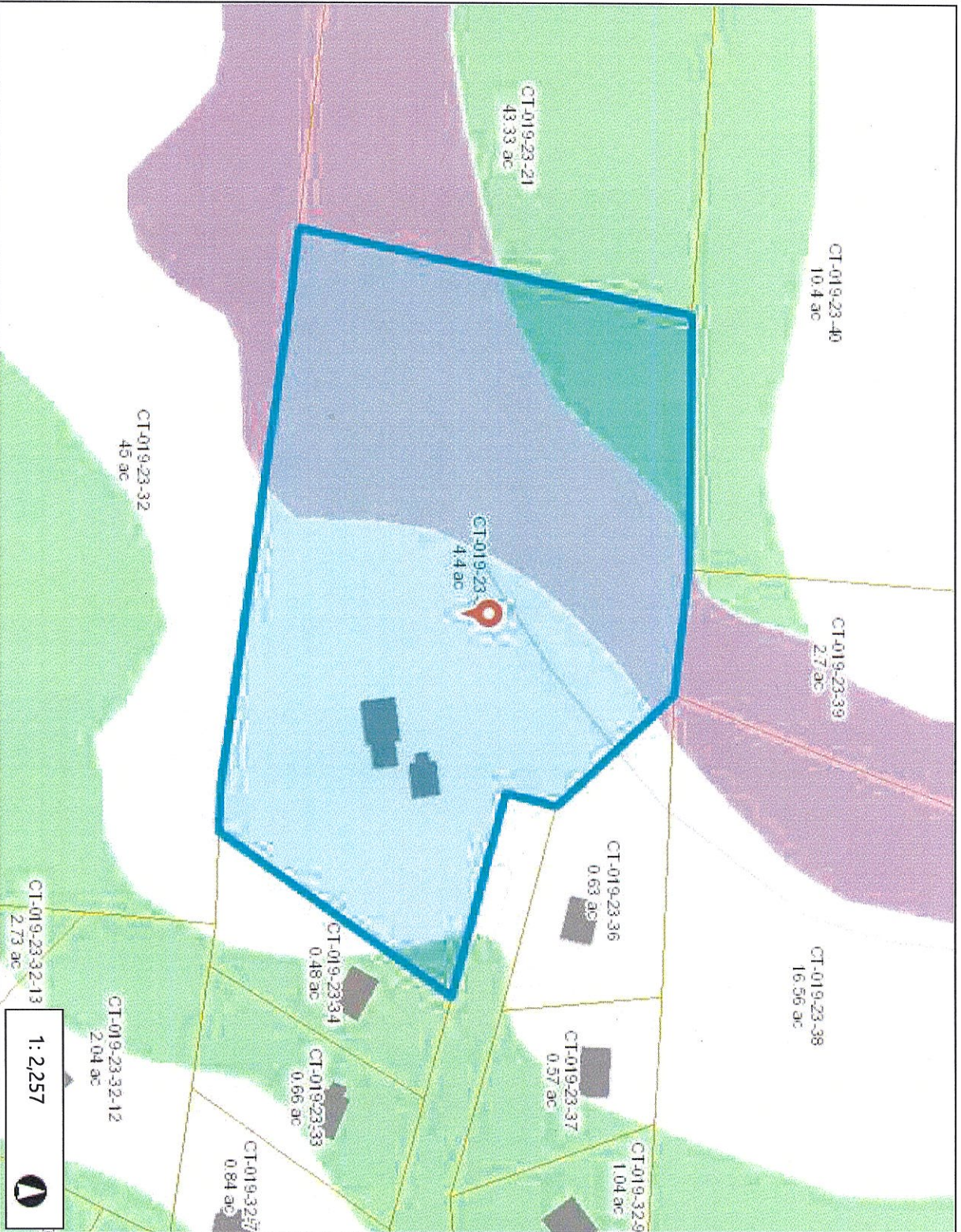
Notes

35 Kara Road aerial map showing
Creamery Brook



neccoog

Neccoog GIS Site

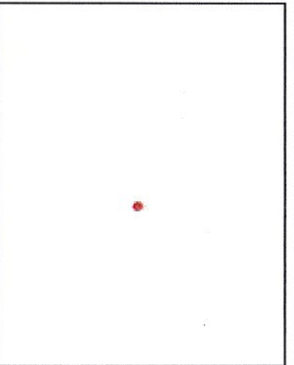


WGS, 1984 Web Mercator Auxiliary Sphere
 © Latitude Geographics Group Ltd.

This map is a user generated static output from an Internet mapping site and is for reference only. Data layers that appear on this map may or may not be accurate, current, or otherwise reliable.

THIS MAP IS NOT TO BE USED FOR NAVIGATION

1:2,257



- Legend**
- Town
 - Buildings 2012
 - Parcels
 - Wetlands**
 - Alluvial and Floodplain Soils
 - Poorly Drained and Very Poorly Drained

Notes

35 Kara Road showing wetlands

Google Earth Map

showing wetlands soils

Google Earth

© 2021 Google

Filled wet lands

35 Kara Rd

Legend

- 35 Kara Rd
- Alluvial and Floodplain Soils
- CT600
- Feature 1
- IND
- NB
- Poorly Drained and Very Poorly Drained Soils
- R-10
- R-30
- RB
- VC

300 ft

