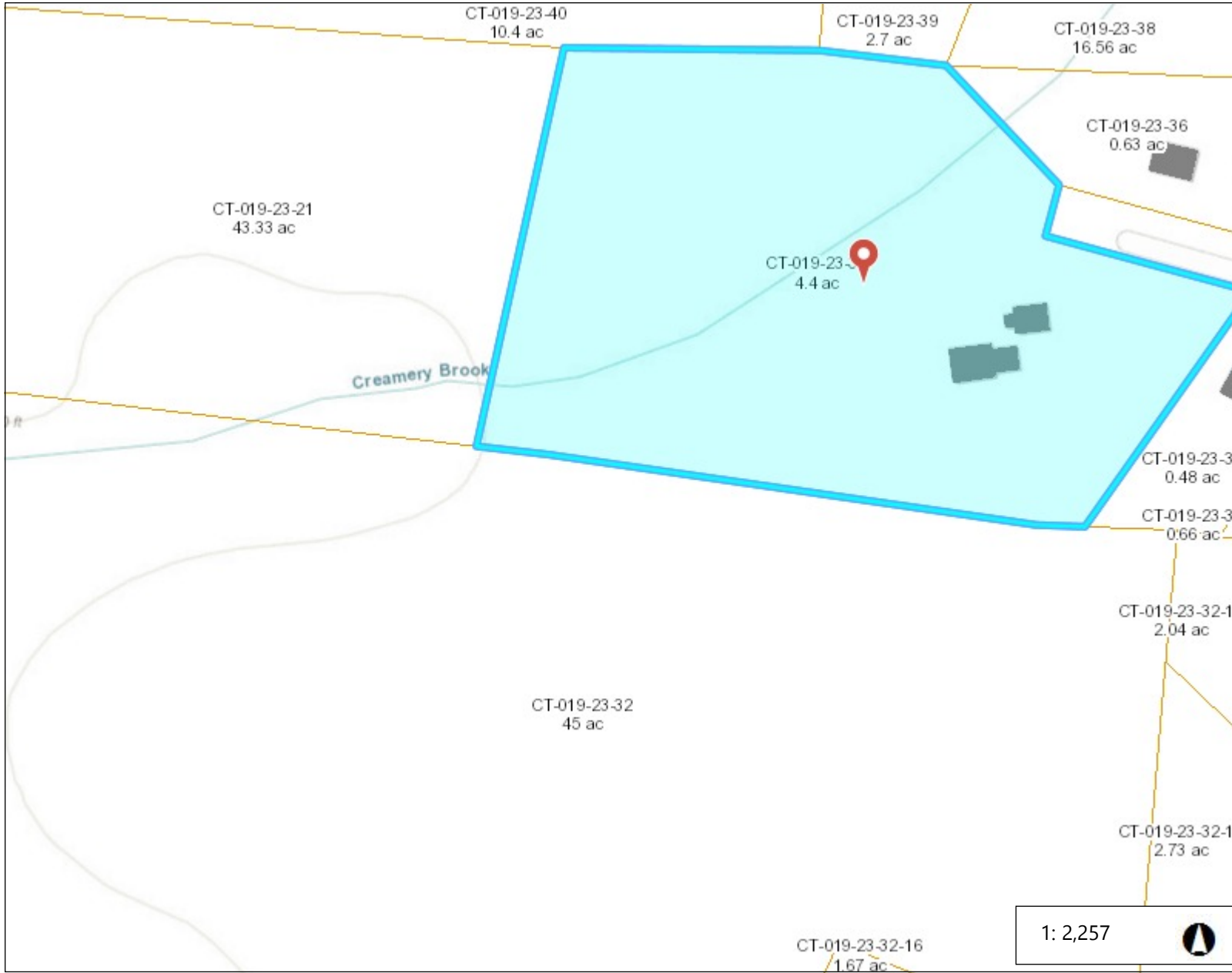




neccog

Neccog GIS Site

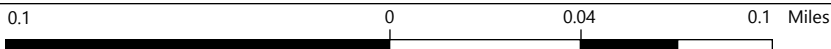


Legend

- Town
- Buildings 2012
- Parcels

Notes

35 Kara Road showing Creamery Brook



WGS_1984_Web_Mercator_Auxiliary_Sphere
© Latitude Geographics Group Ltd.

This map is a user generated static output from an Internet mapping site and is for reference only. Data layers that appear on this map may or may not be accurate, current, or otherwise reliable.

THIS MAP IS NOT TO BE USED FOR NAVIGATION

1: 2,257

